

**PERIMETER  
ARK**  
Executive Center



*This beautifully landscaped business park is the perfect setting  
for our full-service executive center.*



301 South Perimeter Park Drive, Suite 100  
Nashville, Tennessee 37211  
Phone: (615) 781-4200 Fax: (615) 781-4243  
[www.perimeterpark.net](http://www.perimeterpark.net)



*...represents the latest in office innovation  
it's more than just an office...*

*Perimeter **P**ark is an office support system dedicated to building **YOUR** business.*

***W**e work to help you formulate the most cost-effective means to operate your office.*

***O**ur experience in formatting office procedures allows you the opportunity to focus on the revenue-generating aspects of your business. We save you valuable time by doing the necessary, but often time-consuming, secretarial support activities essential to a successful business.*

***B**y sharing our professional staff, conference facilities, reception areas, business center, and state-of-the-art office equipment, you will find the cost of your office effectively lowered.*

***L**ocated off I-24E at the Harding Place exit (56), we are six minutes from the Nashville International Airport and ten minutes from the downtown Nashville business district. Interstate access gives you complete mobility throughout the city, and convenient access for your clients.*

***E**njoy our park-like setting with plenty of free surface parking right outside your office door.*

***O**ur business is taking care of your office, so you can take care of your business. We hope you will choose to join us.*

*An executive office center  
serving Nashville since 1984*



...along with your private offices, Perimeter Park Executive Center  
offers the following at no additional cost...

**Furnished Reception Areas:** *Our professional, friendly staff will greet your clients and visitors.*

**Furnished Conference Rooms and Guest Office:** *Your company receives eight hours per month of complimentary use of any of our four conference rooms. TV/VCRs, speaker phones, internet connection, podium, and dry erase boards included. An overhead projector and screen are also available. The training room is not included in your free hours.*

**Kitchens:** *Gourmet coffee machine, refrigerators, ice maker, microwaves, filtered water cooler, and vending machines are included. Coffee is complimentary for our clients.*

**900 Sq. Ft. Training Room:** *Includes table and chairs, large screen, phone connections, internet connection, and podium. On-site catering is available. This room is available for after-hours use.*

**Free Surface Parking:** *Ample parking is available for you and your guests.*

**Receptionists:** *Your telephone calls are answered with your company name.*

**Mail Service:** *Your incoming mail and priority packages are distributed daily.*

**On-Site Management Staff:** *The day-to-day operations of the office are handled for you, so you are free to concentrate on your business.*

**Utilities and Cleaning Services:** *Daily cleaning is a part of your contract, and all utilities are included. Maintenance and repairs are completed in a timely manner.*

**TGIF Breakfast:** *A complimentary continental breakfast is provided every Friday morning.*



*...and we provide the following services at an additional cost.*

**Word Processing and Design:** *Complete word processing, desktop publishing, graphics, spreadsheets, database management, laser and color printing, and scanning services are available. The Business Center can design logos and create newsletters, brochures, and business cards, in addition to preparing mail merges, creating presentation materials, and maintaining databases. We offer professional, accurate, and convenient service for your business needs.*

**Mailing and Delivery Services:** *We prepare and ship your letters and packages. We offer FedEx interNetShip system to track deliveries.*

**Copy Machines:** *Two copiers are available with document feeders, staplers, collators, and reduction/enlargement capabilities.*

**Facsimile:** *We transmit your outgoing faxes for you and you are immediately notified of incoming faxes.*

**Conference Rooms:** *Additionally, usage of our three conference rooms, seminar room, and guest office, with TV/VCR, speaker phones, marker boards, and overhead projectors, is available.*

**Furniture and Plant Rental:** *Whether you need one piece or an office-full, we can arrange the lease of furniture. Plants, including weekly maintenance, are also available.*

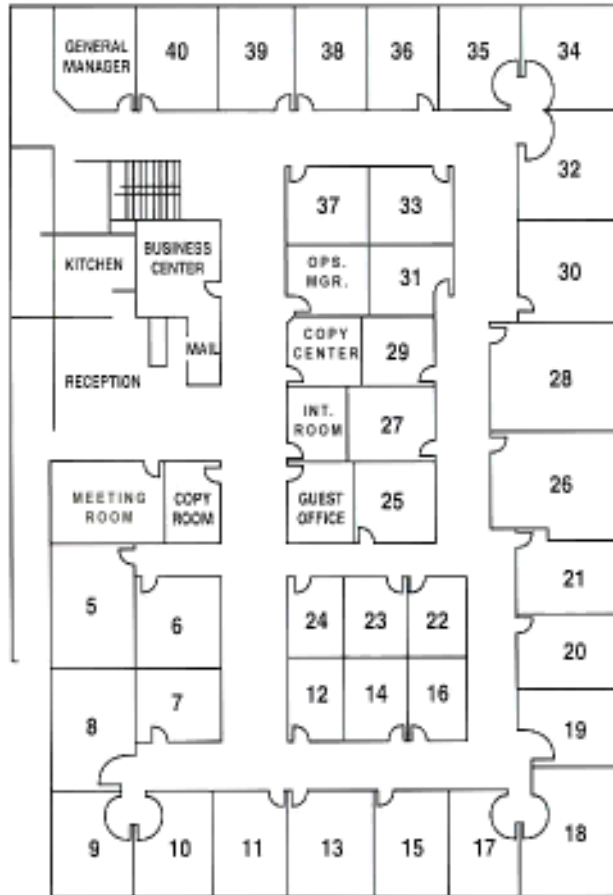
**Catering:** *We cater refreshments or meals for your meetings.*

**Office Supplies:** *The Business Center is stocked with standard office supplies, and we can order anything else you need.*

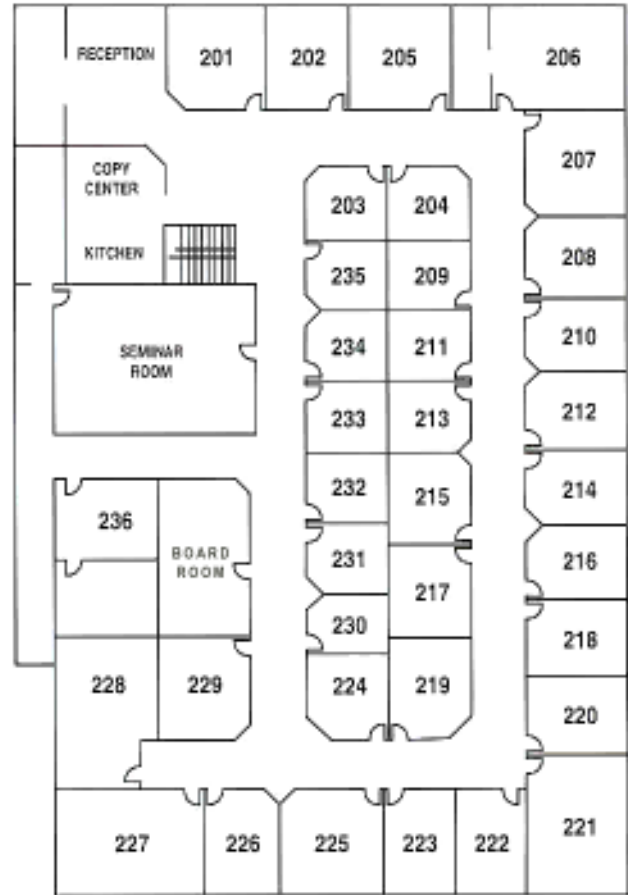
**High-Speed Internet Access:** *This is available through a full T-1 line terminated in your office.*

**Gym Facilities:** *A YMCA is located across the street.*

# floor plan



first floor



second floor

## notes:

---



---



---



---



---



---



---



---



---



---

# directions

301 South Perimeter Park Drive, Suite 100 Nashville, Tennessee 37211

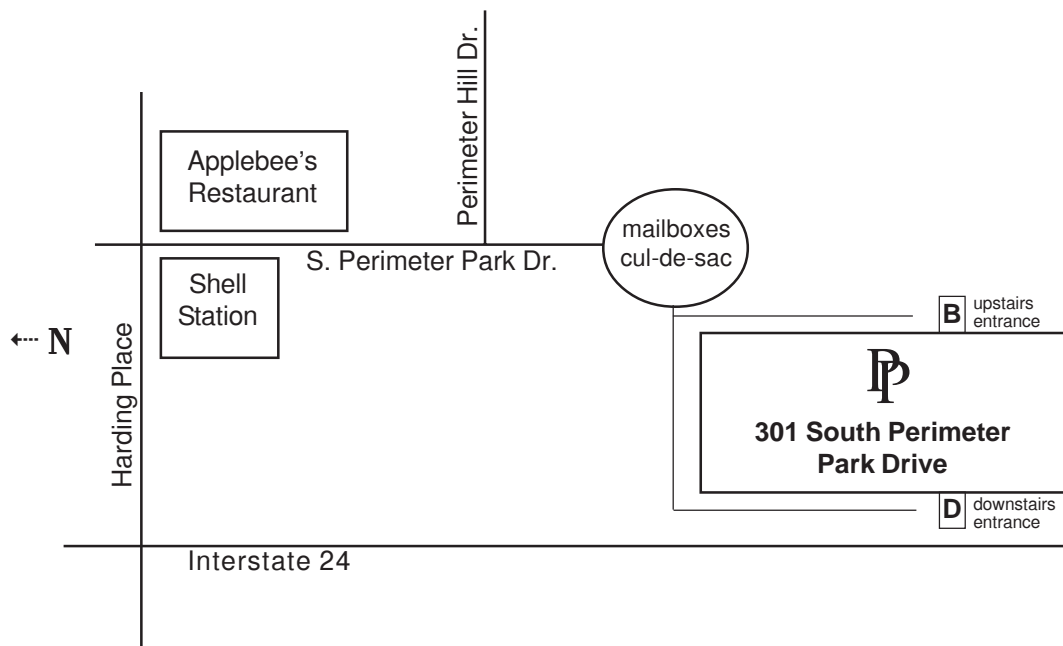
*Perimeter Park Drive is located between the Shell gas station and Applebee's restaurant.  
Follow South Perimeter Park Drive until it dead-ends into a cul-de-sac and our parking lot.*

## From Downtown

Take Interstate 24 East to Harding Place (exit 56).  
Turn left at stoplight at the end of the exit ramp.  
At second stoplight turn right on South Perimeter Park Drive.

## From Airport

When exiting the airport, turn right onto Donelson Pike South.  
Continue on Donelson Pike until it ends and turns right into Harding Place.  
On Harding Place, go to the third traffic light and turn left onto  
South Perimeter Park Drive.



## From Brentwood

Take Interstate 65 North to Harding Place (exit 78).  
Turn right onto Harding Place as you come off the exit ramp.  
Continue on Harding Place (3.8 miles). After crossing I-24, turn right at second stoplight onto  
South Perimeter Park Drive.

## From Murfreesboro

Take Interstate 24 West to Harding Place (Exit 56).  
Turn right at the stoplight at the end of the exit ramp.  
At first stoplight, turn right on South Perimeter Park Drive.

## local services

### restaurants

Applebee's Grill & Bar	335 Harding Place	333-9012
Demos' Steak & Spaghetti	300 Commerce Street	256-4655
Fifth Quarter	295 Thompson Lane East	366-4268
Longhorn Steakhouse	1175 Murfreesboro Road	361-6457
Merchants	401 Broadway	254-1892
Mikado Japanese Restaurant	410 Metroplex Drive	832-8300
101 <sup>st</sup> Airborne	1362 Murfreesboro Pike #A	361-4212
Rafferty's	4041 Armory Oaks Drive	279-9660
Ruth's Chris Steakhouse	2100 West End Avenue	320-0163
Santa Fe Cantina	902 Murfreesboro Road	367-4448
StockYard	901 2nd Avenue North	255-6464

### hotels

Courtyard	2508 Elm Hill Pike	883-9500
Embassy Suites Hotel	10 Century Boulevard	871-0033
Opryland Hotel	2800 Opryland Drive	889-1000
Residence Inn	2300 Elm Hill Pike	889-8600

### shopping

Cool Springs Galleria	1800 Galleria Boulevard	771-2128
Hickory Hollow Mall	5252 Hickory Hollow Parkway	731-6255
Opry Mills	2802 Opryland Drive	884-7300

### attractions

Grand Ole Opry	2804 Opryland Drive	889-3060
The Hermitage	4580 Rachel's Lane	889-2941
Nashville Zoo	3777 Nolensville Road	833-1534
The Parthenon	West End & 25th Avenue	862-8431
Ryman Auditorium	116 5th Avenue North	254-1445

### cinemas

Bell Forge 10	5400 Bell Forge Lane East	731-1601
Hollywood 27	719 Thompson Lane	298-3445
Nippers Corner 10	15534 Old Hickory Blvd	333-0686
Regal Opry Mills 20 & IMAX	2828 Opryland Drive	514-3461
Movie Phone (showtimes)	—	333-FILM

### health clubs

Gold's Gym	3051 Lebanon Road	627-0838
Gold's Gym	5704 Nolensville Road	333-3633
Nashville Athletic Club	5036 Harding Place	837-8900
YMCA	411 Metroplex Drive	834-1300

### local information web sites

<http://nashville.citysearch.com>  
<http://nashville.about.com>